

# Zandvlei *E.Coli* Water Quality Assessment May to October

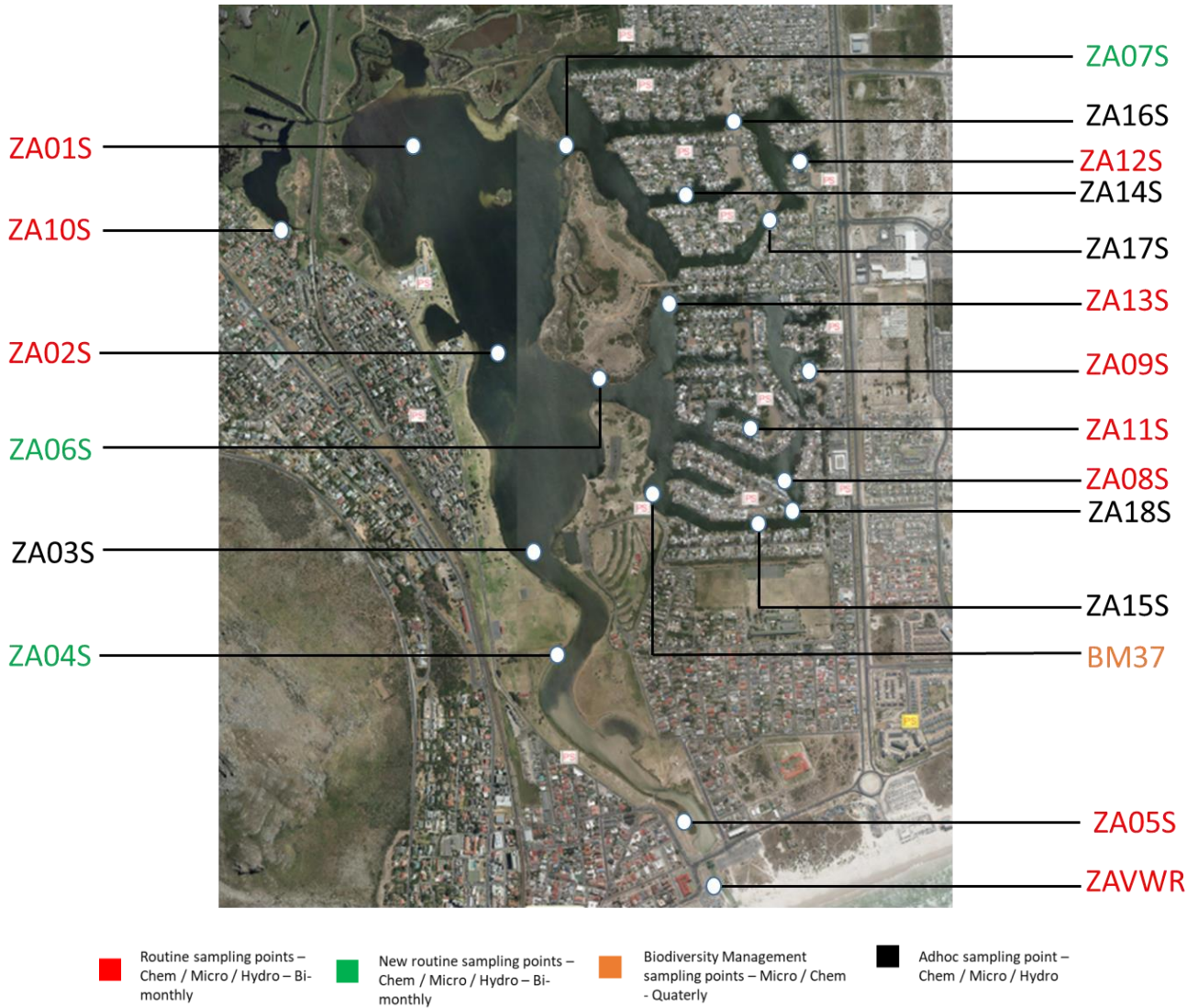


Figure 1: Sampling points for Zandvlei

Table 1: Zandvlei sampling points description and GPS co-ordinates

Sampling point name	Sampling point description	Longitude	Latitude
<b>ZA01S</b>	Zandvlei- north, surface	18.46631	-34.08501
<b>ZA02S</b>	Zandvlei- centre (opposite Imperial Yacht Club), surface	18.46862	-34.08986
<b>ZA04S</b>	Outlet channel - midway to mouth, surface		
<b>ZA05S</b>	Outlet channel near Royal Road bridge, surface	18.47478	-34.10376
<b>ZA06S</b>	South entrance to Marina da Gama canals, surface		
<b>ZA07S</b>	North entrance to Marina da Gama canals, surface		
<b>ZA08S</b>	Marina da Gama canal near "The Anchorage", surface	18.47628	-34.09246
<b>ZA09S</b>	Marina da Gama canal - South of Spearhead Rd, surface	18.47801	-34.09339
<b>ZA10S</b>	Westlake Wetland opposite Rutter Road	18.46076	-34.08691
<b>ZA11S</b>	Marina da Gama canals - East Lake , surface	18.47872	-34.09085
<b>ZA12S</b>	Marina da Gama canals - Baalen Way, surface	18.47805	-34.08542
<b>ZA13S</b>	Marina da Gama canals - under Park Island Bridge, surface	18.47414	-34.08888
<b>ZAVWR</b>	Zandvlei at rubble weir	18.47514	-34.10488
<b>ZA03S</b>	Zandvlei- south (opposite Playwaters), surface		
<b>ZA14S</b>	Marina da Gama canals - at 12 Michel Walk , surface		
<b>ZA15S</b>	Marina da Gama canals - at the end of Battle Ridge canal, surface		
<b>ZA16S</b>	Marina da Gama canals - at Foot bridge Thibault,surface		
<b>ZA17S</b>	Marina da Gama canals - at road bridge on Twagen , surface		
<b>ZA18S</b>	Marina da Gama canals - at Cannon Island Bridge		
<b>BM37</b>	Caravan Park site		

